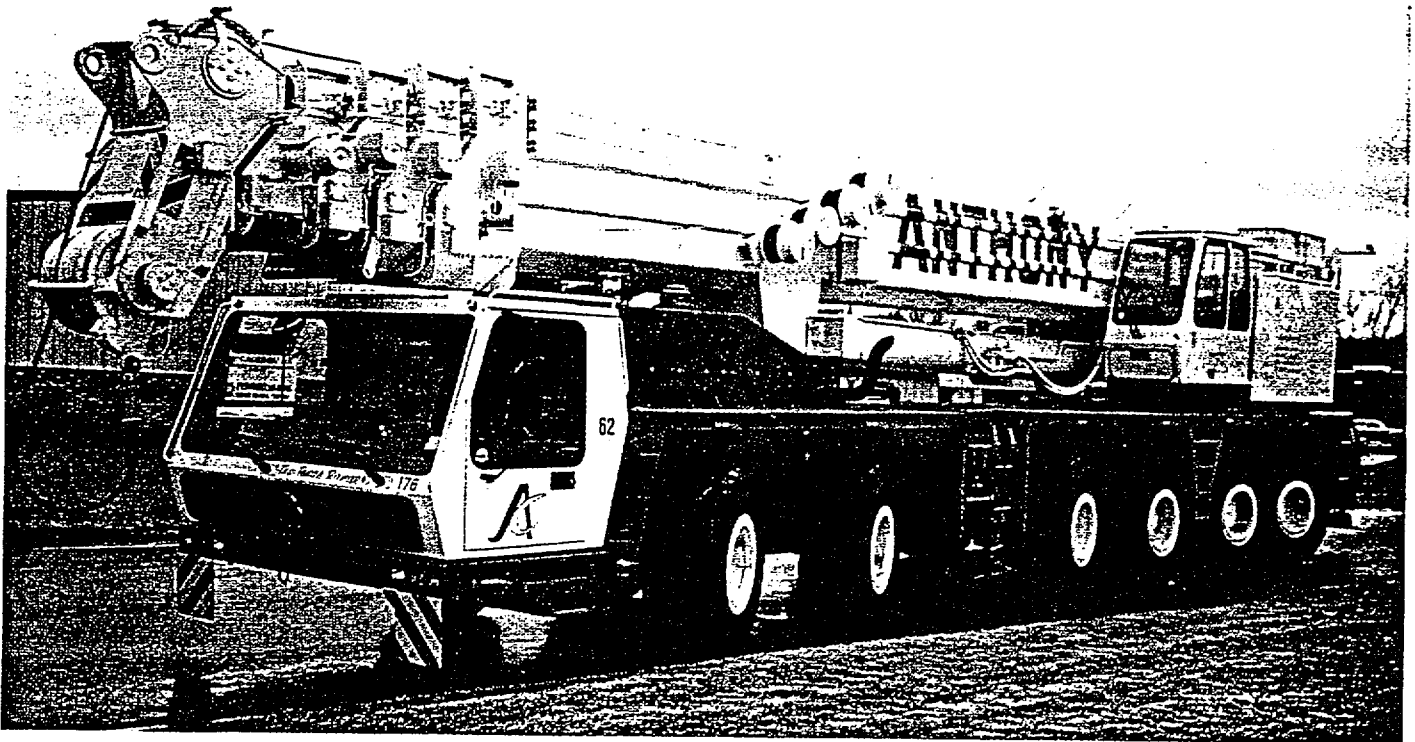
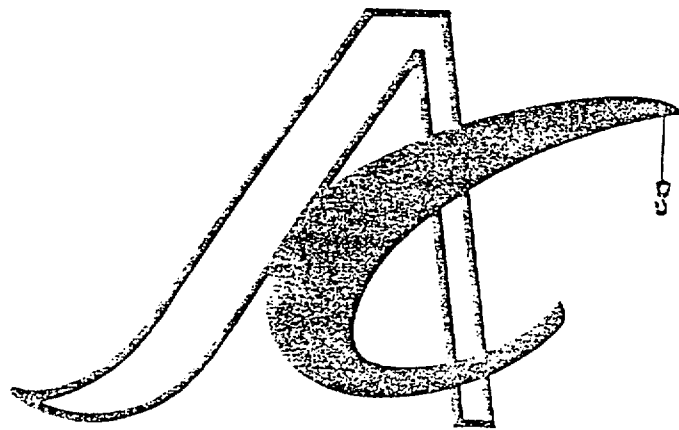


The Crane Specialist

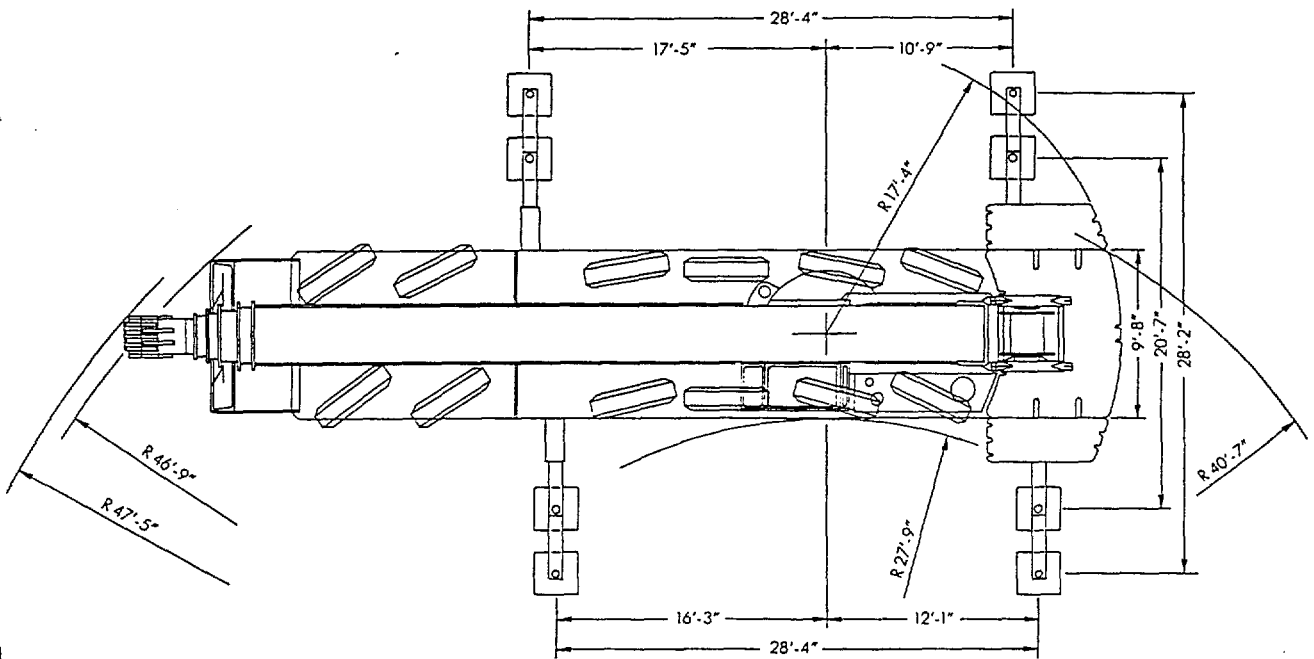
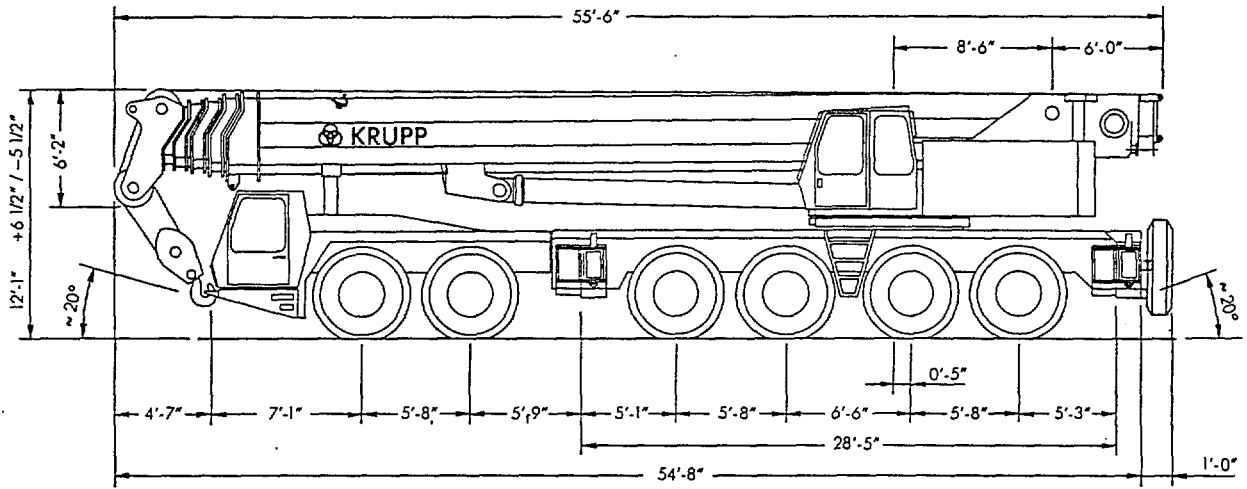


Krupp MEGA TRACK 300 Ton Hydraulic All-Terrain Crane



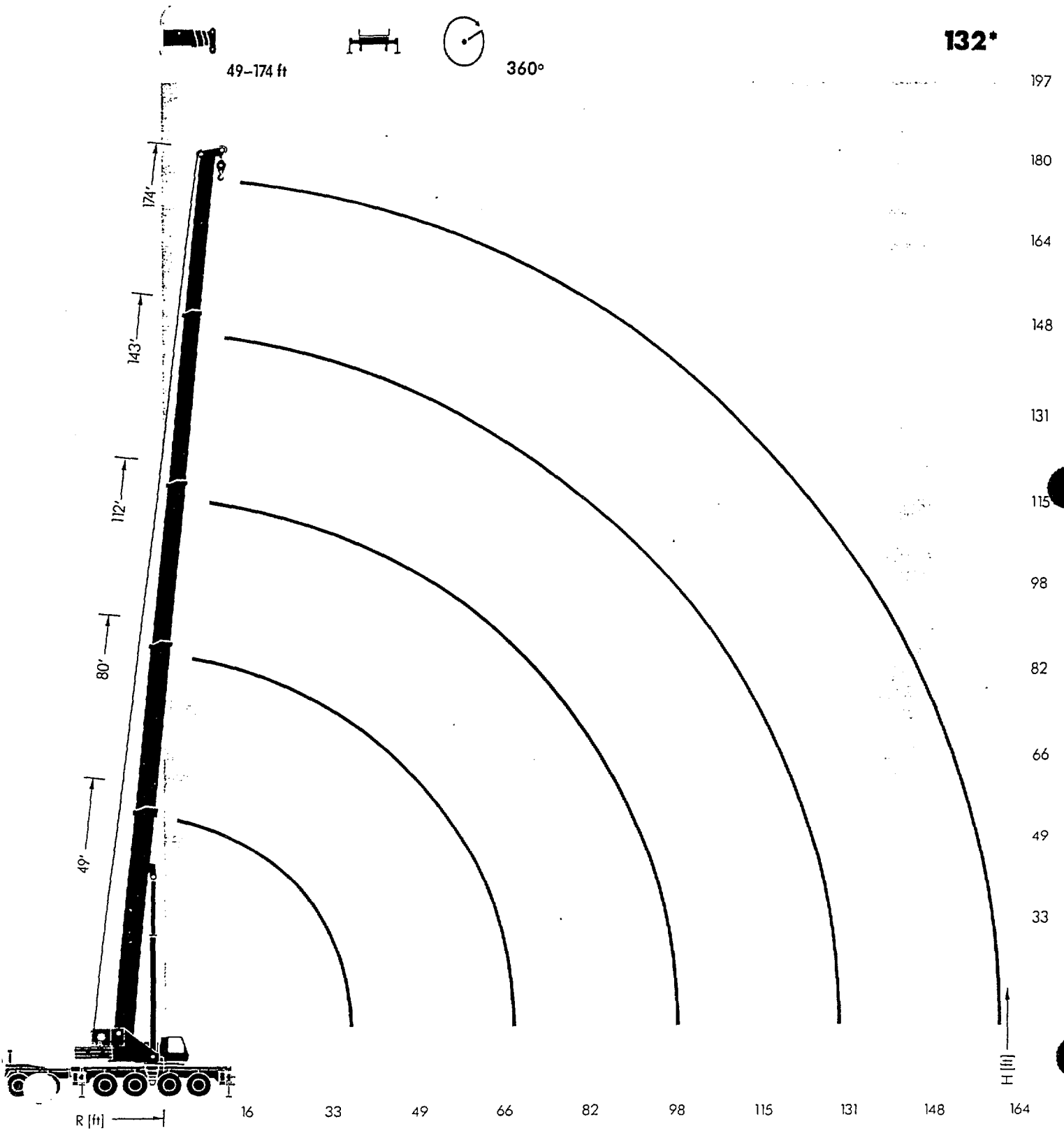
ANTHONY Crane Rental, Inc.

Dimensions



Hook elevation diagram

Main boom



*1000 lbs

Main boom

Lifting capacities in 1000 lbs

49-174ft

360°

Counterweight **132,2*** lbs

Radius		Boom length						Radius	
ft	49 ft*	49 ft	80 ft	112 ft	143 ft	174 ft	ft		
** 9	600.0						9		
10	481.6	388.8					10		
15	373.9	307.5	272.0				15		
20	282.2	250.9	227.8	174.3			20		
25	224.9	211.1	195.2	151.0			25		
30	179.5	180.7	170.3	131.6	92.2		30		
35		154.6	151.6	116.0	92.2	59.4	35		
40			127.5	103.0	88.2	59.4	40		
45			108.6	92.5	80.7	58.4	45		
50			93.7	83.9	74.3	54.6	50		
55			81.7	76.6	68.6	51.1	55		
60			71.9	70.5	63.6	47.6	60		
65			63.6	62.7	59.1	44.4	65		
70				55.2	55.0	41.3	70		
75				48.5	51.3	38.5	75		
80				42.8	46.7	35.8	80		
85				37.8	41.7	33.3	85		
90				33.4	37.3	31.1	90		
95					33.4	29.1	95		
100					30.0	27.2	100		
105					26.9	25.6	105		
110					24.1	24.1	110		
115					21.7	22.8	115		
120					19.4	21.6	120		
125						20.4	125		
130						18.5	130		
135						16.7	135		
140						15.1	140		
145						13.4	145		
150						11.8	150		
155						10.3	155		
	T1	0	0	50	100	100	100	T1	
	T2	0	0	50	100	100	100	T2	
	T3	0	0	0	0	100	100	T3	
	T4	0	0	0	0	0	100	T4	

Counterweight **88,2*** lbs

Radius		Boom length					Radius	
ft	49 ft	80 ft	112 ft	143 ft	174 ft	ft		
10	382.3					10		
15	302.2	272.0				15		
20	246.5	227.8	174.3			20		
25	207.4	195.2	151.0			25		
30	165.4	162.6	131.6	92.2		30		
35	135.0	132.3	116.0	92.2	59.4	35		
40		109.9	103.0	88.2	59.4	40		
45		93.1	92.1	80.7	58.4	45		
50		76.8	75.8	74.3	54.6	50		
55		63.8	62.9	67.7	51.1	55		
60		53.7	52.8	57.4	47.6	60		
65		45.3	44.3	48.9	44.4	65		
70			37.5	41.9	41.3	70		
75			31.8	36.1	38.5	75		
80			27.0	31.2	34.9	80		
85			22.9	27.0	30.6	85		
90			19.3	23.4	26.9	90		
95			16.2	20.2	23.6	95		
100				17.4	20.8	100		
105				14.9	18.3	105		
110				12.8	16.0	110		
115				10.8	14.0	115		
120				9.0	12.2	120		
125					10.5	125		
130					9.0	130		
135					7.6	135		
140					6.3	140		
145					5.1	145		
150					3.8	150		
155					2.6	155		

* over rear only; 28'4" x 20'8" outrigger base

** with special lift equipment

*1000 lbs

Main boom + lattice extension (25° off-set)

Lifting capacities in 1000 lbs



33-125ft

360°

Counterweight **132,2 * lbs**

Radius ft	Main boom 143 ft					Radius ft
	33 ft	56 ft	79 ft	102 ft	125 ft	
40	30.9					40
45	29.6					45
50	28.4					50
55	27.4	22.1				55
60	26.3	21.2				60
65	25.4	20.4				65
70	24.6	19.7				70
75	23.8	19.1	14.7			75
80	23.1	18.5	14.3			80
85	22.4	18.0	13.9	10.1		85
90	21.8	17.5	13.5	9.8		90
95	21.2	17.0	13.2	9.4		95
100	20.7	16.6	12.8	9.2	7.1	100
105	20.2	16.2	12.5	8.9	6.9	105
110	19.8	15.8	12.2	8.7	6.7	110
115	19.4	15.5	11.9	8.4	6.5	115
120	19.0	15.2	11.6	8.2	6.4	120
125	18.6	14.8	11.4	8.1	6.2	125
130	18.2	14.5	11.2	7.9	6.0	130
135	16.2	14.2	11.0	7.8	5.9	135
140	14.2	13.9	10.8	7.6	5.7	140
145	12.2	13.7	10.6	7.5	5.6	145
150	10.4	13.4	10.5	7.4	5.4	150
155	8.6	12.4	10.3	7.3	5.3	155
160		10.7	10.2	7.2	5.2	160
165		9.1	10.1	7.1	5.1	165
170		7.6	10.0	7.0	5.0	170
175		6.2	9.9	7.0	4.9	175
180		4.7	9.8	6.9	4.8	180
185			8.4	6.9	4.7	185
190			7.1	6.8	4.6	190
195			5.8	6.8	4.6	195
200			4.6	6.7	4.5	200
205			3.3	5.9	4.4	205
210				4.7	4.4	210
215				3.7	4.4	215
220					4.3	220
	T1 100	100	100	100	100	T1 100
	T2 100	100	100	100	100	T2 100
	T3 100	100	100	100	100	T3 100
	T4 0	0	0	0	0	T4 0

%

%

*1000 lbs

Notes for lifting capacities

Rated loads do not exceed 85% of tipping load with the machine properly levelled on firm ground.

360° duties - on outriggers fully extended.

Note counterweight required as listed in relevant lifting capacity columns.

For safe crane operation due allowance must be made to compensate for high winds, side load, pendulum action and other hazardous conditions. No side pull permitted.

Hook blocks, slings and / or boom attachments are considered part of load, and their weight must be deducted from the rated lifting capacity to determine the net load.

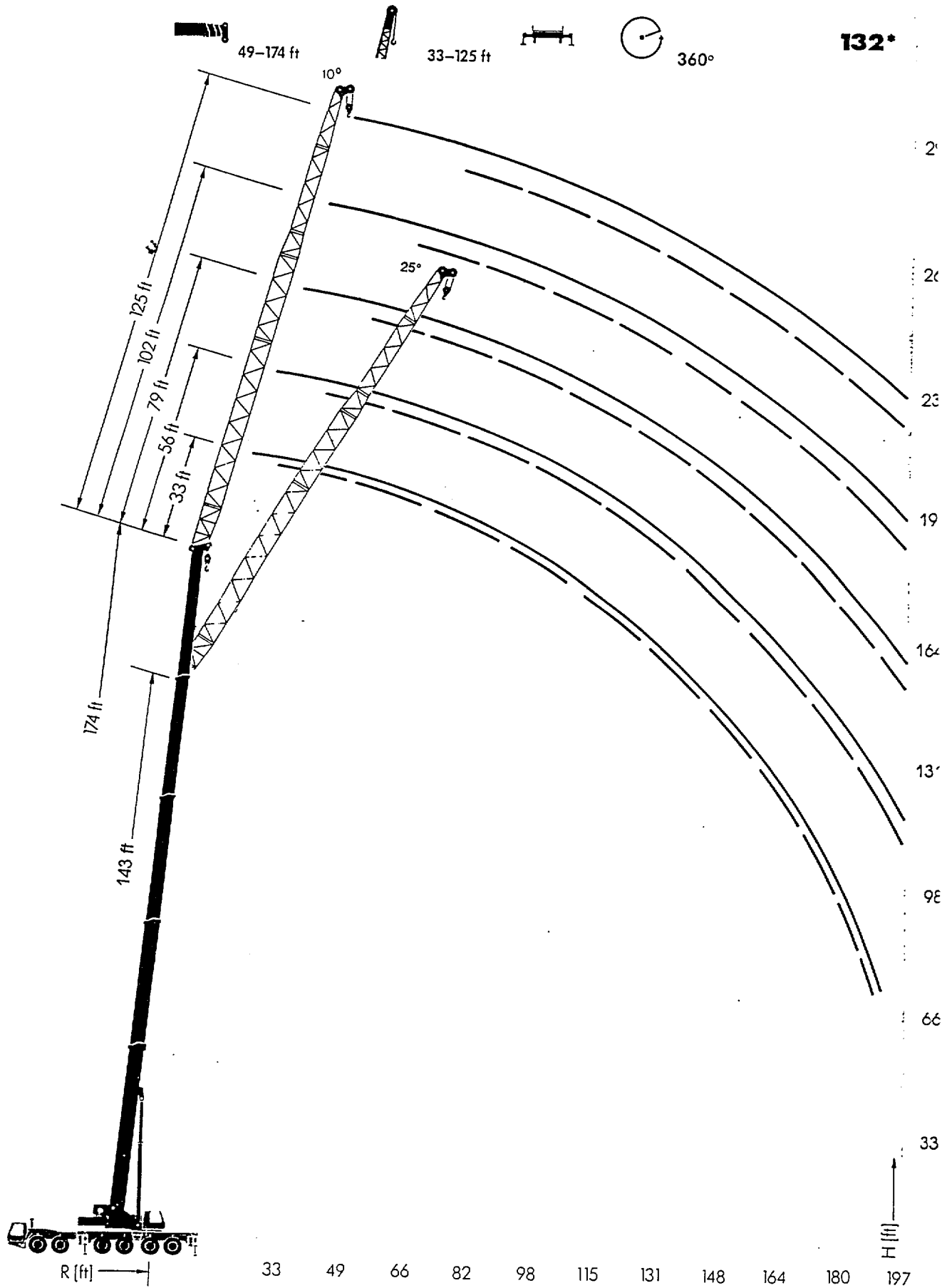
Boom must be extended in accordance with sequence as noted on lifting capacity chart.

Consult crane manual to determine weight reduction for load handling devices and boom attachments.

Operate crane strictly in compliance with operator's manual.

Hook elevation diagram

Lattice extension



Main boom + lattice extension (10° off-set)

Lifting capacities in 1000 lbs

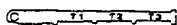


33-125 ft

360°

Counterweight **132,2**

Radius		Main boom 174 ft					Radius	
ft	33 ft	56 ft	79 ft	102 ft	125 ft	ft		
40	28.7					40		
45	27.3					45		
50	26.0	20.8				50		
55	24.9	19.8	16.2			55		
60	23.8	19.0	15.5	12.7		60		
65	22.8	18.2	14.9	12.2		65		
70	22.0	17.5	14.3	11.6		70		
75	21.2	16.8	13.7	11.1	9.0	75		
80	20.4	16.2	13.2	10.7	8.7	80		
85	19.8	15.7	12.7	10.2	8.4	85		
90	19.1	15.1	12.2	9.8	8.1	90		
95	18.6	14.7	11.7	9.4	7.8	95		
100	18.0	14.2	11.3	9.1	7.5	100		
105	17.5	13.8	10.8	8.7	7.2	105		
110	17.0	13.4	10.4	8.4	6.9	110		
115	16.5	13.0	10.1	8.1	6.7	115		
120	16.1	12.6	9.7	7.8	6.4	120		
125	15.6	12.3	9.4	7.5	6.2	125		
130	15.2	12.0	9.0	7.3	5.9	130		
135	14.8	11.6	8.7	7.0	5.7	135		
140	14.4	11.3	8.5	6.8	5.5	140		
145	14.0	11.0	8.2	6.6	5.3	145		
150	13.2	10.7	8.0	6.4	5.1	150		
160	10.3	10.2	7.5	6.0	4.7	160		
170	7.7	9.1	7.2	5.6	4.4	170		
180	5.4	6.8	6.9	5.3	4.0	180		
190	3.4	4.8	6.3	5.0	3.7	190		
200			4.5	4.7	3.5	200		
210				3.3	3.2	210		
	T1	100	100	100	100	T1		
	T2	100	100	100	100	T2		
	T3	100	100	100	100	T3		
	T4	100	100	100	100	T4		

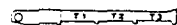
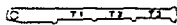


%

%

Counterweight **88,2*** lbs

Radius		Main boom 174 ft					Radius	
ft	33 ft	56 ft	79 ft	102 ft	125 ft	ft		
40	28.7					40		
45	27.3					45		
50	26.0	20.8				50		
55	24.9	19.8	16.2			55		
60	23.8	19.0	15.5	12.7		60		
65	22.8	18.2	14.9	12.2		65		
70	22.0	17.5	14.3	11.6		70		
75	21.2	16.8	13.7	11.1	9.0	75		
80	20.4	16.2	13.2	10.7	8.7	80		
85	19.8	15.7	12.7	10.2	8.4	85		
90	19.1	15.1	12.2	9.8	8.1	90		
95	18.6	14.7	11.7	9.4	7.8	95		
100	18.0	14.2	11.3	9.1	7.5	100		
105	17.5	13.8	10.8	8.7	7.2	105		
110	17.0	13.4	10.4	8.4	6.9	110		
115	15.9	13.0	10.1	8.1	6.7	115		
120	14.0	12.6	9.7	7.8	6.4	120		
125	12.3	12.3	9.4	7.5	6.2	125		
130	10.7	12.0	9.0	7.3	5.9	130		
135	9.3	10.5	8.7	7.0	5.7	135		
140	8.0	9.2	8.5	6.8	5.5	140		
145	6.7	8.0	8.2	6.6	5.3	145		
150	5.6	6.8	8.0	6.4	5.1	150		
160	3.4	4.8	6.1	6.0	4.7	160		
170			4.2	4.7	4.4	170		
180				3.3	3.3	180		
	T1	100	100	100	100	T1		
	T2	100	100	100	100	T2		
	T3	100	100	100	100	T3		
	T4	100	100	100	100	T4		



%

%

Main boom + lattice extension (25° off-set)

Lifting capacities in 1000 lbs

33-125 ft

360°

Counterweight **88,2*** lbs

Radius

Main boom

Radius

ft
40
45
50
55
60
65
70
75
80
85
90
95
100
105
110
115
120
125
130
135
140
145
150
155
160
165
170
175
180
185
190
195

33 ft
30.9
29.6
28.4
27.4
26.3
25.4
24.6
23.8
23.1
22.4
21.8
21.2
20.7
19.6
17.1
14.8
12.7
10.8
9.1
7.5
6.1
4.5
3.0

56 ft
22.1
21.2
20.4
19.7
19.1
18.5
18.0
17.5
17.0
16.6
16.2
15.8
15.5
15.2
14.3
12.5
10.8
9.3
7.8
6.5
5.2
3.8

143 ft
79 ft
14.7
14.3
13.9
13.5
13.2
12.8
12.5
12.2
11.9
11.6
11.4
11.2
11.0
10.8
10.6
10.5
9.5
8.2
7.0
5.8
4.8
3.5
2.3

102 ft
10.1
9.8
9.4
9.2
8.9
8.7
8.4
8.2
8.1
7.9
7.8
7.6
7.5
7.4
7.3
7.2
7.1
7.0
6.7
5.7
4.7
3.5

125 ft
7.1
6.9
6.7
6.5
6.4
6.2
6.0
5.9
5.7
5.6
5.4
5.3
5.2
5.1
5.0
4.9
4.8
4.7
4.6
4.5
3.4

ft
40
45
50
55
60
65
70
75
80
85
90
95
100
105
110
115
120
125
130
135
140
145
150
155
160
165
170
175
180
185
190
195

T1	100	100
T2	100	100
T3	100	100
T4	0	0

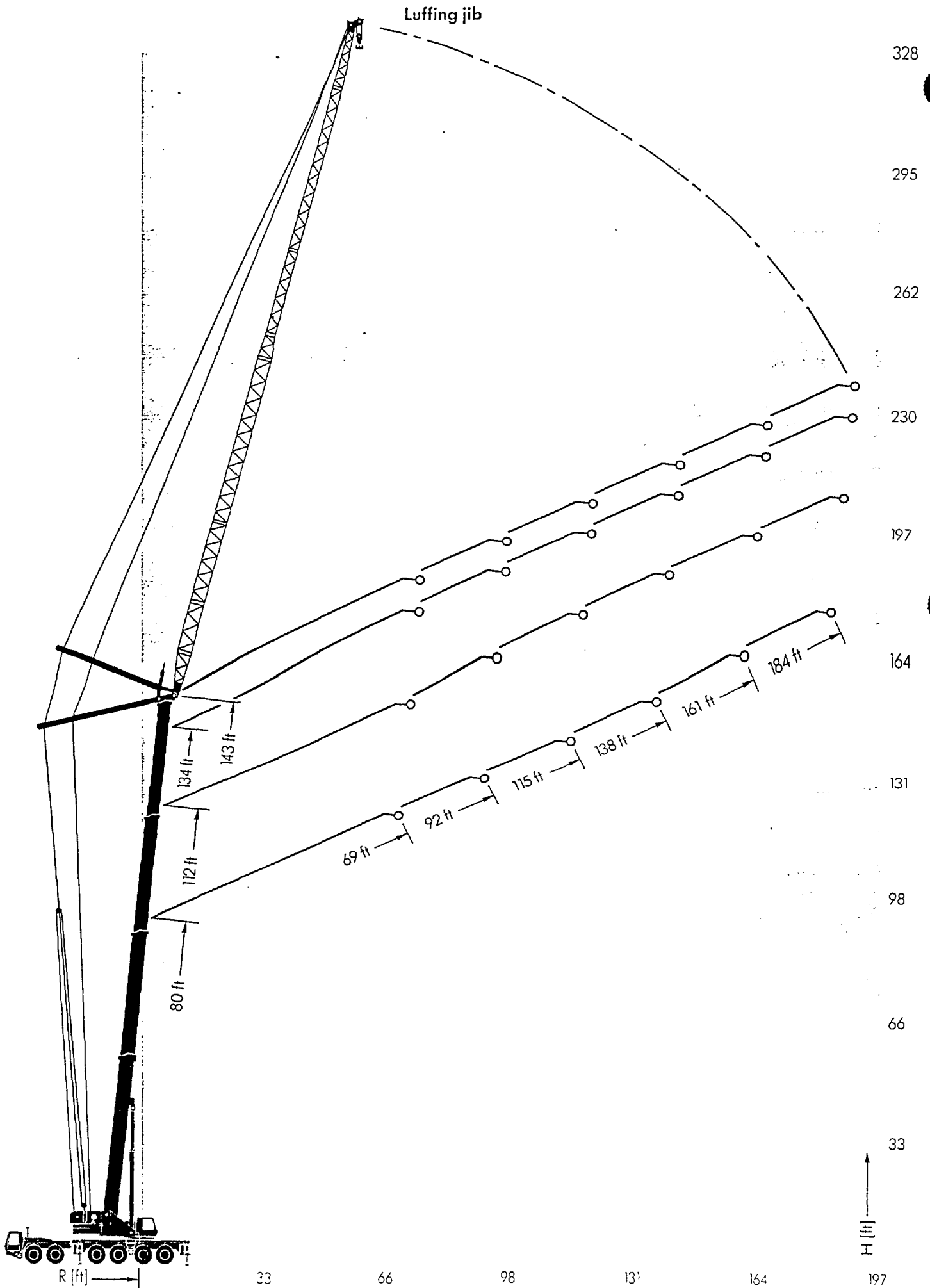
%

T1
T2
T3
T4

%




*1000 lbs

Hook elevation diagram


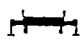



Main boom + luffing jib


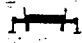

Lifting capacities in 1000 lbs
Main boom at 75°

80 ft    360° **88.2* lbs**


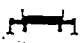

Radius	Fly jib length						Radius
ft	69 ft	92 ft	115 ft	138 ft	161 ft	184 ft	ft
60	66.1						60
65	59.1	57.3					65
70	53.2	53.0					70
75	48.1	48.5					75
80	43.8	44.3	41.4				80
85	40.1	40.6	39.6	32.0			85
90		37.5	36.6	32.0			90
95		34.8	33.9	31.7			95
100		32.4	31.5	30.6	24.3		100
105		30.2	29.3	28.4	24.3		105
110			27.5	26.6	24.3		110
115			25.9	25.0	23.7	17.6	115
120			24.3	23.5	22.6	17.6	120
125			22.9	22.0	21.1	17.6	125
130			21.7	20.8	19.9	17.6	130
140				18.5	17.6	16.5	140
150				16.5	15.6	14.5	150
160					13.9	12.8	160
170					12.4	11.3	170
180						10.1	180
190						8.9	190
200							200
210							210
T1	50	50	50	50	50	50	T1
T2	50	50	50	50	50	50	T2
T3	0	0	0	0	0	0	T3
T4	0	0	0	0	0	0	T4

112 ft    360° **88.2* lbs**

Radius	Fly jib length						Radius
ft	69 ft	92 ft	115 ft	138 ft	161 ft	184 ft	ft
60							60
65							65
70							70
75	41.7						75
80	37.8						80
85	34.8	34.6					85
90	32.1	32.1					90
95		29.7					95
100		27.6	26.6				100
105		25.8	24.9	23.8			105
110		24.3	23.2	22.1			110
115		22.8	21.8	20.7			115
120			20.5	19.4	17.8		120
125			19.3	18.2	17.1	13.9	125
130			18.1	17.0	15.9	13.9	130
140				15.2	14.0	12.9	140
150				13.4	12.3	11.2	150
160				12.0	10.9	9.8	160
170					9.6	8.5	170
180					8.4	7.4	180
190						6.4	190
200						5.5	200
210						4.6	210
T1	100	100	100	100	100	100	T1
T2	100	100	100	100	100	100	T2
T3	0	0	0	0	0	0	T3
T4	0	0	0	0	0	0	T4

134 ft    360° **88.2* lbs**

Radius	Fly jib length						Radius
ft	69 ft	92 ft	115 ft	138 ft	161 ft	184 ft	ft
60							60
65							65
70							70
75							75
80	29.9						80
85	28.5						85
90	27.2						90
95	25.8	23.7					95
100		22.9					100
105		22.0	18.5				105
110		21.2	18.0				110
115		20.4	17.5				115
120		19.4	17.0	13.8			120
125		18.2	16.5	13.4			125
130			16.0	12.9			130
140			14.4	12.0	10.0	7.2	140
150				11.3	9.3	6.9	150
160					8.6	6.5	160
170					8.0	6.0	170
180					7.0	5.6	180
190					6.2	5.1	190
200							200
210							210
T1	100	100	100	100	100	100	T1
T2	100	100	100	100	100	100	T2
T3	70	70	70	70	70	70	T3
T4	0	0	0	0	0	0	T4

143 ft    360° **88.2* lbs**

Radius	Fly jib length						Radius
ft	69 ft	92 ft	115 ft	138 ft	161 ft	184 ft	ft
60							60
65							65
70							70
75							75
80							80
85	22.9						85
90	21.8						90
95	21.0						95
100	20.2	18.4					100
105	19.4	17.9					105
110		17.4					110
115		16.8	13.8				115
120		16.3	13.3				120
125		15.8	13.0				125
130			12.5	10.0			130
140			11.5	9.3	7.4		140
150			10.7	8.8	6.9	4.4	150
160				8.4	6.3	4.2	160
170				8.0	6.0	4.0	170
180					5.6	3.6	180
190					5.1	3.1	190
200						2.7	200
210						2.4	210
T1	100	100	100	100	100	100	T1
T2	100	100	100	100	100	100	T2
T3	100	100	100	100	100	100	T3
T4	0	0	0	0	0	0	T4

*1000 lbs

Main boom + luffing jib

Lifting capacities in 1000 lbs

Main boom at 84°



Radius ft	Fly jib length						Radius ft
	69 ft	92 ft	115 ft	138 ft	161 ft	184 ft	
35	87.0						35
40	84.0	65.0					40
45	81.0	64.8	49.0				45
50	79.0	64.6	48.8				50
55	72.0	63.5	48.7	36.0			55
60	62.0	62.6	48.6	35.8	27.0		60
65	55.0	55.0	48.5	35.7	27.0	19.8	65
70	50.0	48.2	47.4	35.6	27.0	19.8	70
75		45.8	45.2	35.5	27.0	19.8	75
80		41.0	39.6	35.4	27.0	19.8	80
85		38.3	37.4	35.3	27.0	19.8	85
90			34.6	33.0	27.0	19.8	90
95			32.1	30.8	27.0	19.8	95
100			29.7	28.6	26.7	19.8	100
105			27.7	27.1	26.2	19.8	105
110			25.7	25.3	24.6	19.8	110
115				23.8	22.7	19.8	115
120				22.0	21.1	19.5	120
125				20.9	19.0	19.1	125
130				19.6	19.7	17.8	130
140					16.5	15.6	140
150					14.7	13.8	150
160							160
170							170
T1	50	50	50	50	50	50	T1
T2	50	50	50	50	50	50	T2
T3	0	0	0	0	0	0	T3
T4	0	0	0	0	0	0	T4

0% T1 50 50 50 50 50 50 T1
 0% T2 50 50 50 50 50 50 T2
 0% T3 0 0 0 0 0 0 T3
 0% T4 0 0 0 0 0 0 T4



Radius ft	Fly jib length						Radius ft
	69 ft	92 ft	115 ft	138 ft	161 ft	184 ft	
35							35
40	55.5						40
45	54.5	43.8					45
50	54.0	42.5					50
55	53.0	41.2	32.0				55
60	52.8	41.1	32.0	24.2			60
65	51.9	41.0	32.0	24.2			65
70	47.3	40.6	32.0	24.2	18.0		70
75		40.3	32.0	24.2	18.0	13.9	75
80		40.0	32.0	24.2	18.0	13.9	80
85			32.0	24.2	18.0	13.9	85
90			32.0	24.2	18.0	13.9	90
95			31.2	24.2	18.0	13.9	95
100			30.4	24.2	18.0	13.9	100
105			27.7	24.2	18.0	13.9	105
110				24.2	18.0	13.9	110
115				23.1	18.0	13.9	115
120				22.0	18.0	13.9	120
125				20.9	18.0	13.9	125
130					18.0	13.9	130
140					17.0	13.9	140
150						13.9	150
160							160
170							170
T1	100	100	100	100	100	100	T1
T2	100	100	100	100	100	100	T2
T3	0	0	0	0	0	0	T3
T4	0	0	0	0	0	0	T4

0% T1 100 100 100 100 100 100 T1
 0% T2 100 100 100 100 100 100 T2
 0% T3 0 0 0 0 0 0 T3
 0% T4 0 0 0 0 0 0 T4



Radius ft	Fly jib length						Radius ft
	69 ft	92 ft	115 ft	138 ft	161 ft	184 ft	
35							35
40	35.0						40
45	35.0	26.0					45
50	35.0	26.0					50
55	35.0	26.0					55
60	35.0	26.0	20.0				60
65	35.0	26.0	20.0	15.4			65
70	35.0	26.0	20.0	15.4	11.6		70
75	35.0	26.0	20.0	15.4	11.6		75
80		26.0	20.0	15.4	11.6	7.4	80
85		26.0	20.0	15.4	11.6	7.4	85
90		26.0	20.0	15.4	11.6	7.4	90
95			20.0	15.4	11.6	7.4	95
100			20.0	15.4	11.6	7.4	100
105			20.0	15.4	11.6	7.4	105
110			20.0	15.4	11.6	7.4	110
115			20.0	15.4	11.6	7.4	115
120				15.4	11.6	7.4	120
125				15.4	11.6	7.4	125
130				15.4	11.6	7.4	130
140					11.6	7.4	140
150					11.6	7.4	150
160							160
170							170
T1	100	100	100	100	100	100	T1
T2	100	100	100	100	100	100	T2
T3	70	70	70	70	70	70	T3
T4	0	0	0	0	0	0	T4

0% T1 100 100 100 100 100 100 T1
 0% T2 100 100 100 100 100 100 T2
 0% T3 70 70 70 70 70 70 T3
 0% T4 0 0 0 0 0 0 T4



Radius ft	Fly jib length						Radius ft
	69 ft	92 ft	115 ft	138 ft	161 ft	184 ft	
35							35
40							40
45	28.0						45
50	28.0						50
55	28.0	22.0					55
60	28.0	22.0	16.0	11.6			60
65	28.0	22.0	16.0	11.6			65
70	28.0	22.0	16.0	11.6			70
75		22.0	16.0	11.6	8.1		75
80		22.0	16.0	11.6	8.1	5.5	80
85		22.0	16.0	11.6	8.1	5.5	85
90		22.0	16.0	11.6	8.1	5.5	90
95			16.0	11.6	8.1	5.5	95
100			16.0	11.6	8.1	5.5	100
105			16.0	11.6	8.1	5.5	105
110			16.0	11.6	8.1	5.5	110
115				11.6	8.1	5.5	115
120				11.6	8.1	5.5	120
125				11.6	8.1	5.5	125
130				11.6	8.1	5.5	130
140					8.1	5.5	140
150					8.1	5.5	150
160						5.5	160
170						5.5	170
T1	100	100	100	100	100	100	T1
T2	100	100	100	100	100	100	T2
T3	100	100	100	100	100	100	T3
T4	0	0	0	0	0	0	T4

0% T1 100 100 100 100 100 100 T1
 0% T2 100 100 100 100 100 100 T2
 0% T3 100 100 100 100 100 100 T3
 0% T4 0 0 0 0 0 0 T4



*1000 lbs

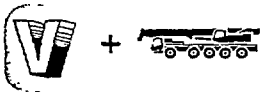
Weights / Working speeds



Axle	1	2	3	4	5	6	Total weight
1000 lbs	26,5	26,5	26,5	26,5	26,5	26,5	159,0



Lifting capacity	Sheaves	Parts of line	Weight lbs
150	7	2 - 15	5730
110	5	2 - 11	3300
70	3	1 - 7	2200
30	1	1 - 3	1320



Gear	1	2	3	4	5	R	Gradeability max.
On-road (mp/h)	8	13	21	30	42	9	
Off-road (mp/h)	4,5	7,5	12	17,5	24,5	5	47%
Tires	14.00 R 25						



Drives	infinitely variable	Rope diameter / Rope length	Max. single line pull
Main hoist	0-426 ft/min single line	24 mm (1") 1000 ft	21,600 lbs
Auxiliary hoist	0-426 ft/min single line	24 mm (1") 1100 ft	21,600 lbs
Swing gear	0 - 1,6 min ⁻¹		
Boom elevation	approx. 78 s from -1,2° to +85° boom angle		
Telescoping	approx. 165 s from 49 to 143 ft 340 s from 49 to 174 ft boom length		



Telescopic boom



On outriggers



Working range



Axle load



Hook blocks and hook



Crane movements



Speed



Boom extension

Carrier

Chassis:	Special KRUPP 6-axle carrier, all-welded torsion-resistant box-type construction in high strength steel.
Outriggers:	4 double hydraulically telescoping beams with vertical cylinders and outrigger pads. Independent horizontal and vertical movement control on each side of the chassis. Levelling device.
Engine:	Mercedes-Benz OM 444 A diesel, 12 cylinders, water-cooled, 405 kW (551 HP) at 2100 min ⁻¹ (DIN 6271 IFN). Max. torque: 1100 Nm at 1000–1500 min ⁻¹ . Tank capacity: approx. 125 gal.
Transmission:	Allison 5-speed automatic.
Transfer case:	Transfer case with 2 speeds and longitudinal differential lock.
Axle lines:	6 axle lines; 1st, 2nd, 3rd, 5th and 6th steering axle lines; 1st, 2nd, 4th and 5th driven axle lines.
Suspension:	All axle lines with hydropneumatic suspension and axle lock-out. Level regulation. Suspension range: + 6½"/–5½". Possible combinations for transverse slope.
Tires:	12 tires 14.00 R 25.
Steering:	ZF dual-circuit hydraulic power assisted steering.
Brakes:	Service brake: pneumatic dual-circuit, acting on all wheels, air dryer. Permanent brake: hydraulic retarder integrated with Allison automatic transmission. Hand brake: pneumatically operated spring-loaded brake acting on 2nd, 4th, 5th and 6th axle line.
Driver's cab:	Aluminium, 2-man-design, safety glass, driver's seat with hydraulic suspension, engine hot-water heating. Complete instrumentation and driving controls.
Electrical system:	Three-phase generator 28V/55 A, 2 batteries 12V/170 Ah, lighting system and signals.

Superstructure

Frame:	KRUPP-made, torsion-resistant welded construction in high strength steel.
Engine:	Mercedes-Benz OM 447 A diesel, 6 cylinders, water-cooled, 218 kW (296 HP) at 2100 min ⁻¹ (DIN 6271 IFN). Max. torque 1226 Nm at 1100–1600 min ⁻¹ . Tank capacity: 75 gal.
Hydraulic system:	4 separate circuits, 3 axial piston variable displacement pumps in open circuit with electronic engine speed related pump control and 1 axial piston variable displacement pump in closed circuit. Tank capacity: 500 gal hydraulic oil.
Control system:	Infinite variation of all crane movements by electrically, controlled hydraulic pilot circuit and control levers with automatic reset to zero.
Main hoist:	Axial-piston variable displacement motor with planetary gear and automatic brake.
Boom elevation:	1 cylinder with safety check valve, boom angle from –1,2° to +85°.
Swing:	2 axial piston fixed displacement motors, planetary gear, holding brake and service brake.
Cab:	Aluminium, full vision, safety glass, adjustable operator's seat with hydraulic suspension, engine hot-water-heating. Amrest integrated crane controls. Ergonomically arranged instrumentation and crane operating controls.
Safety installations:	Hoist and lowering limit switch, pipe burst safety valves, pressure relief valves.
Telescopic boom:	Welded construction in high strength steel, 1 base section, 4 telescopic sections. Total boom length: 174 ft, all-hydraulic extension under partial load.
Electrical system:	Three-phase generator 28V/55 A, 2 batteries 12V/143 Ah.

Additional equipment

Tires:	12 tires 16.00 R25 / 20.5 R25.
Boom extension:	Lattice design, 33 - 125 ft, in sections of 23 ft.
Luffing jib:	Lattice design, 69 - 184 ft, in sections of 23 ft.
Aux. hoist:	2nd hoisting gear.
Safe load indicator:	Electronic load moment safety device (type EKS 83) with automatic cut-out and digital display for actual and admissible load, radius and various working conditions.
Driver's cab:	Engine-independent heater, also to be used as engine preheater.

Further equipment upon request.

Subject to change without notice.